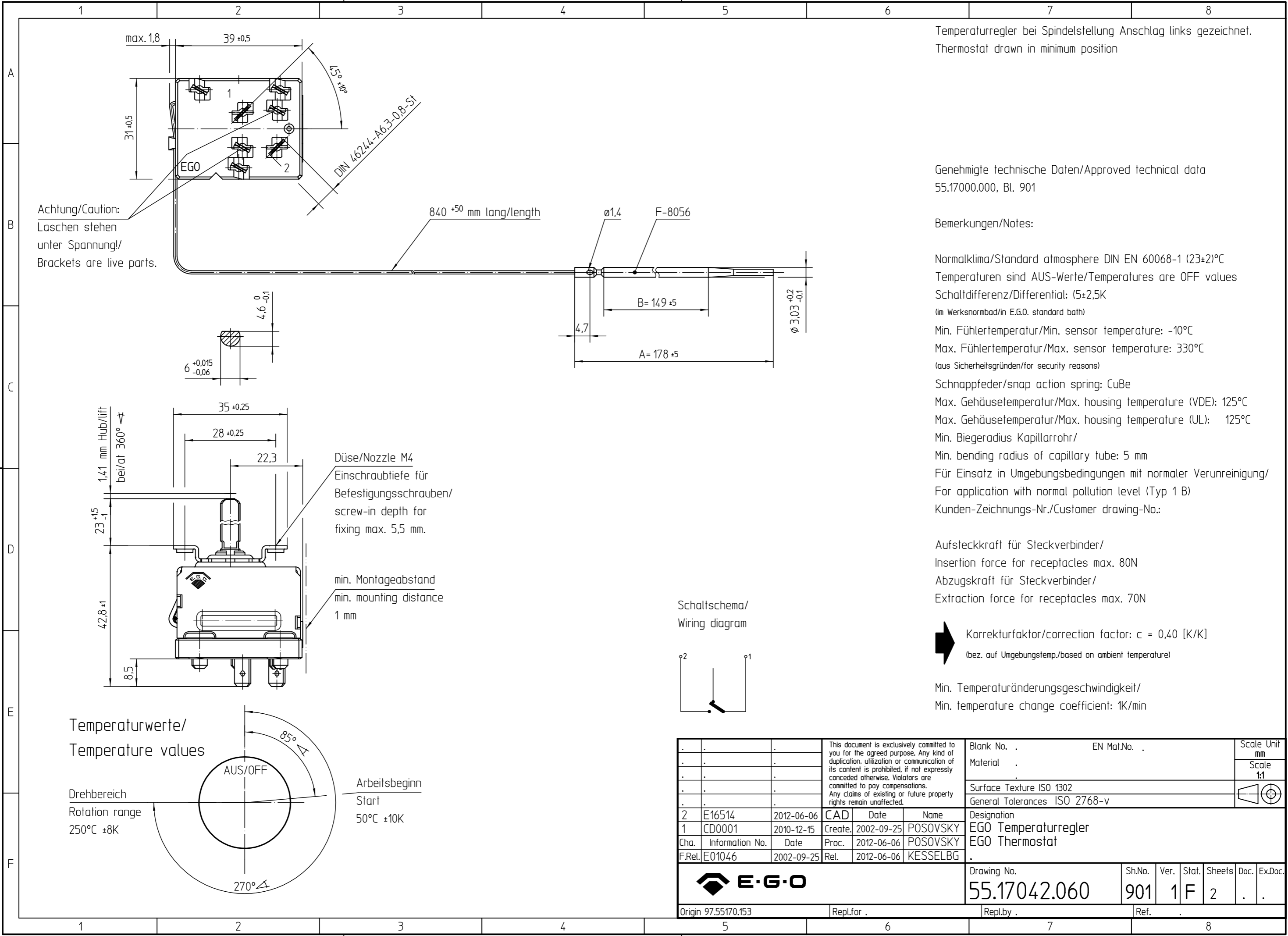


Doc.ID 55.17042.060-901-01-A Doc. status 2301 released
 View date 2018-05-18 Viewed by CURINIP
 Art.ID 55.17042.060-00/69A SAP Status 2F



Temperaturregler bei Spindelstellung Anschlag links gezeichnet.
 Thermostat drawn in minimum position

Genehmigte technische Daten/Approved technical data
 55.17000.000, Bl. 901

Bemerkungen/Notes:

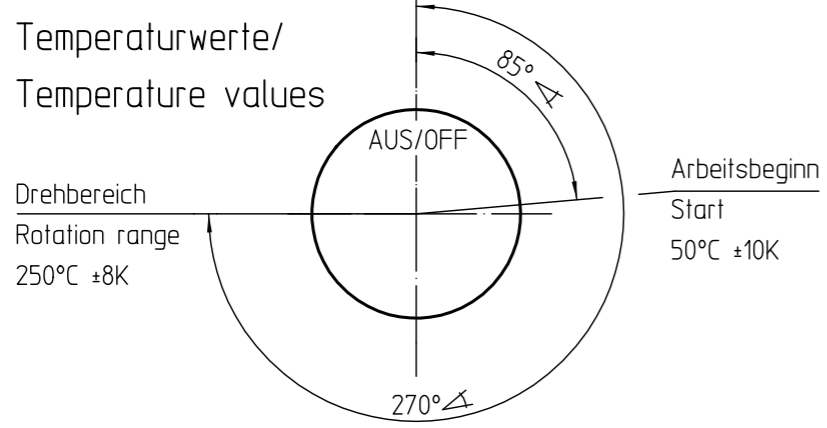
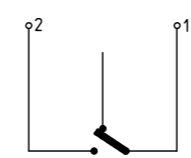
Normalklima/Standard atmosphere DIN EN 60068-1 (23±2)°C
 Temperaturen sind AUS-Werte/Temperatures are OFF values
 Schaltdifferenz/Differential: (5±2,5K
 (im Werksnormbad/in E.G.O. standard bath)
 Min. Fühlertemperatur/Min. sensor temperature: -10°C
 Max. Fühlertemperatur/Max. sensor temperature: 330°C
 (aus Sicherheitsgründen/for security reasons)
 Schnappfeder/snap action spring: CuBe
 Max. Gehäusetemperatur/Max. housing temperature (VDE): 125°C
 Max. Gehäusetemperatur/Max. housing temperature (UL): 125°C
 Min. Biegeradius Kapillarrohr/
 Min. bending radius of capillary tube: 5 mm
 Für Einsatz in Umgebungsbedingungen mit normaler Verunreinigung/
 For application with normal pollution level (Typ 1 B)
 Kunden-Zeichnungs-Nr./Customer drawing-No.:

Aufsteckkraft für Steckverbinder/
 Insertion force for receptacles max. 80N
 Abzugskraft für Steckverbinder/
 Extraction force for receptacles max. 70N

➔ Korrekturfaktor/correction factor: $c = 0,40 [K/K]$
 (bez. auf Umgebungstemp./based on ambient temperature)

Min. Temperaturänderungsgeschwindigkeit/
 Min. temperature change coefficient: 1K/min

Schaltschema/
 Wiring diagram



This document is exclusively committed to you for the agreed purpose. Any kind of duplication, utilization or communication of its content is prohibited, if not expressly conceded otherwise. Violators are committed to pay compensations. Any claims of existing or future property rights remain unaffected.				Blank No. .	EN Mat.No. .	Scale Unit mm
				Material .		Scale 1:1
				Surface Texture ISO 1302		
				General Tolerances ISO 2768-v		
2	E16514	2012-06-06	CAD	Date	Name	Designation
1	CD0001	2010-12-15	Create.	2002-09-25	POSOVSKY	EGO Temperaturregler
Cha.	Information No.	Date	Proc.	2012-06-06	POSOVSKY	EGO Thermostat
F.Rel.	E01046	2002-09-25	Rel.	2012-06-06	KESSELBG	
				Drawing No.	Sh.No.	Ver.
				55.17042.060	901	1 F
				2	Doc.	Ex.Doc.
Origin 97.55170.153				Repl.for .	Repl.by .	Ref. .