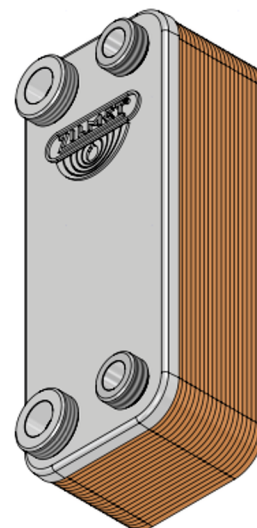
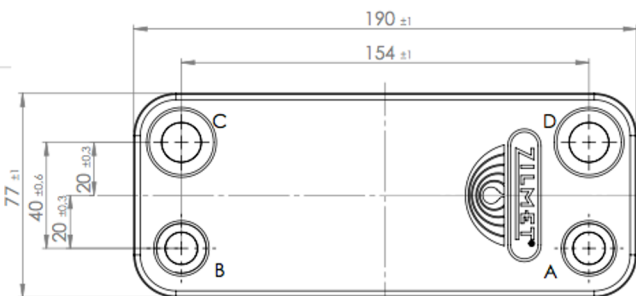
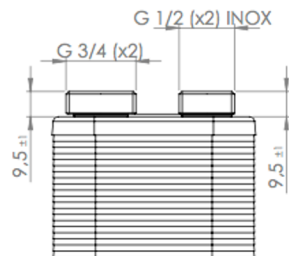
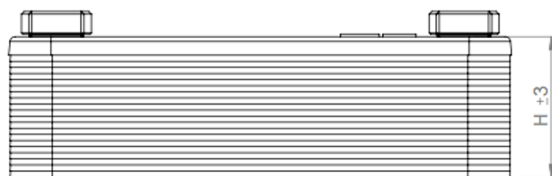


Código RML 359.00.0001



Código RML 359.00.0001

Press.max eserc. circ. primario (Max oper. press. primary circuit): 3 bar
 Press.max eserc. circ. second. (Max oper. press. second. circuit): 8 bar
 Temperatura esercizio (Max oper. temperature): -10/+120 °C
 Materiale piastre corr. (Shaped plates material): SST AISI 316L
 Materiale di brasatura (Brazing material): 99.9% Cu
 Materiale raccordi (Connection material): -

CODE	N° OF PLATES	H
17B1901002	10	30
17B1901202	12	35
17B1901402	14	39
17B1901602	16	44
17B1901802	18	48
17B1902002	20	53
17B1902202	22	58
17B1902402	24	62
17B1902602	26	67
17B1902802	28	71
17B1903002	30	76
17B1904002	40	99
17B1904602	46	113