

Model

Designation	ELX1105Y	220-240V/50Hz ~	Bare code:	16526900
-------------	-----------------	-----------------	------------	----------

Compressor design

Oil type	Mineral	Refrigerant(s)	R600a
Oil viscosity	2,3cSt	Displacement	3,5cm ³ / 0,21cu.in
Oil quantity	77cm ³ / 2,6fl.oz	Compressors on pallet	168
Refr. charge - tech. limit	150g / 5,3oz		
Free gas volume comp.	837cm ³ / 28,3fl.oz		
Weight	3,7kg / 8,2lbs		
Motor protection	external		
Winding resistance main	82,8Ω (at 25°C)		
Winding resistance aux	63,7Ω (at 25°C)		
Max. winding temp.	120°C / 248°F		
Max. discharge temp.	120°C / 248°F		



General - Configurations with ELX1105Y

	Conf. 1
Motorconfiguration	RSCR
Power supply (nominal)	220-240V/50Hz
Number of phases	1
Voltage range	187-264V
Approvals	VDE
Starting torque	LST
Note	Electrical equipment will be pre-assembled to compressor.

Applications with ELX1105Y

	Conf. 1
Refrigerant	R600a
Application	LBP
System cooling	static
Hot gas defrost	-/-
Long interval pull down	-/-

Electrical data - Configurations with ELX1105Y

	Conf. 1
Starting device type	PTC
Run capacitor	1,5μF
Start capacitor	-/-
LRA (locked rotor amps / 4s)	1,4A
RLA (rated load amps / 1s)	
Cut in current	3,8A
IP class	21

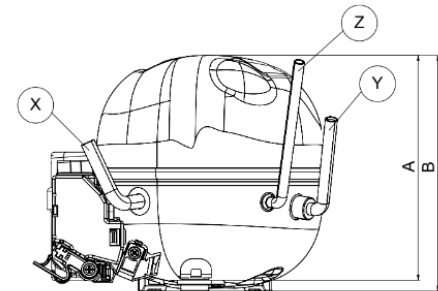
Model

Designation **ELX1105Y** 220-240V/50Hz ~

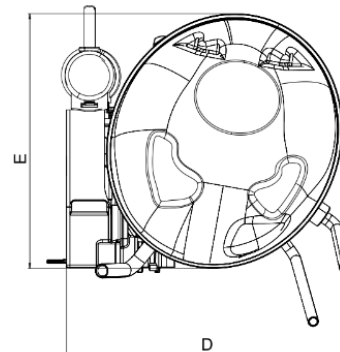
Bare code: 16526900

Compressor dimensions

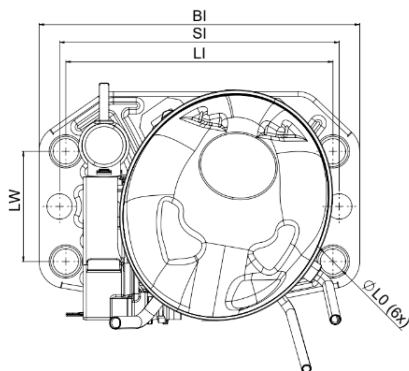
Housing	A Height	133mm / 5,24in
	B Height	134,5mm / 5,3in
	C Length shell	135mm / 5,31in
	D Length w. cover	159mm / 6,26in
	E Width	147mm / 5,79in



Connectors		Suction	Discharge	Process
		X	Y	Z
Diameter	[mm]	Ø i 6,1-6,3	Ø i 4,9-5,1	Ø o 5,92-6,08
(i: inside, o: outside)	[in]	Ø i 0,24-0,25	Ø i 0,19-0,2	Ø o 0,23-0,24
Material		Copper	steel/CU	copper
Horizontal angle	±2°	0°	80°	74°
Vertical angle	±2°	79°	79°	72°
Position l/h/w	[mm]	-54/83/74	87/96/72	69/130/103
	[in]	-2,1/3,3/2,9	3,4/3,8/2,8	2,7/5,1/4,1
Straight tube l.	[mm]	14	14	14
	[in]	0,5	0,5	0,5

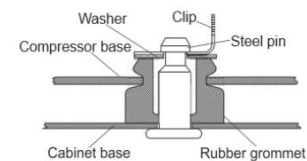


Compressor fixation



Baseplate	[mm]	[inch]
BI	204	8.03
Bw	100	3.94
Large holes	[mm]	[inch]
LI	170	6.7
Lw	70	2.76
SI	178	7
øL	ø 16	ø 0.63

Snap-on



For standard mounting
Snap-on | ø7,3 | ø16mm

one compressor
118-1947

Application notes

Various options of housing are possible (dip-tray fixture) - please contact NIDEC-Sales.

Various options of connectors are possible - please contact NIDEC-Sales.

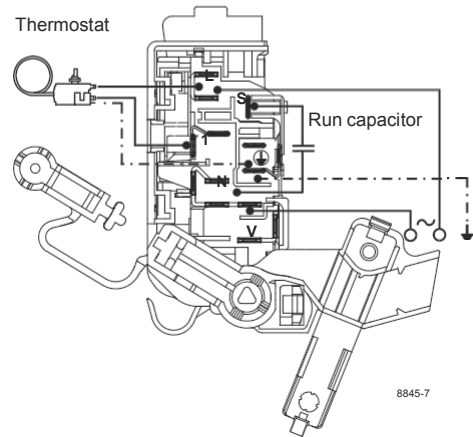
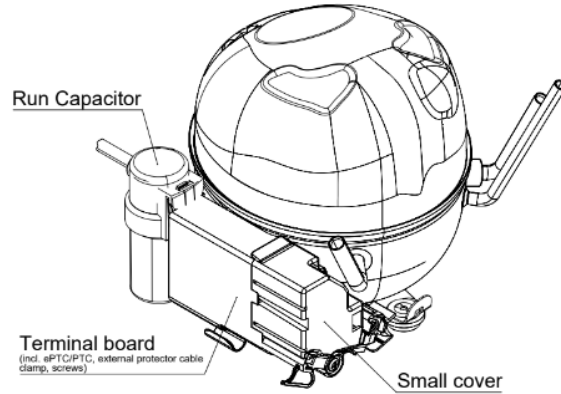
Model

Designation **ELX1105Y** 220-240V/50Hz Conf. 1 Bare code: 16526900

Configuration

Motor configuration RSCR
 Power supply (nominal) 220-240V/50Hz 1~
 Refrigerant R600a
 Application LBP
 Voltage range 187-264V
 Starting torque LST
 Approvals VDE

Electrical accessories / wiring diagram

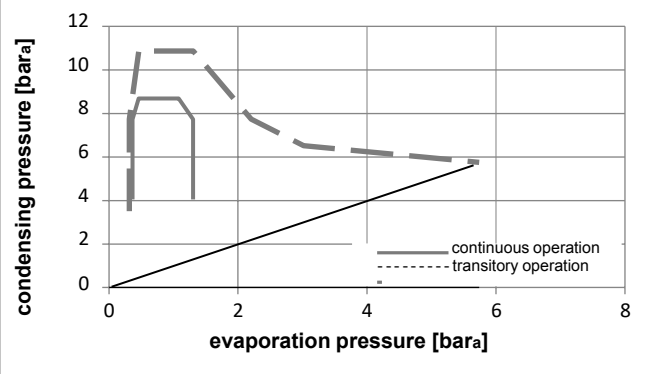
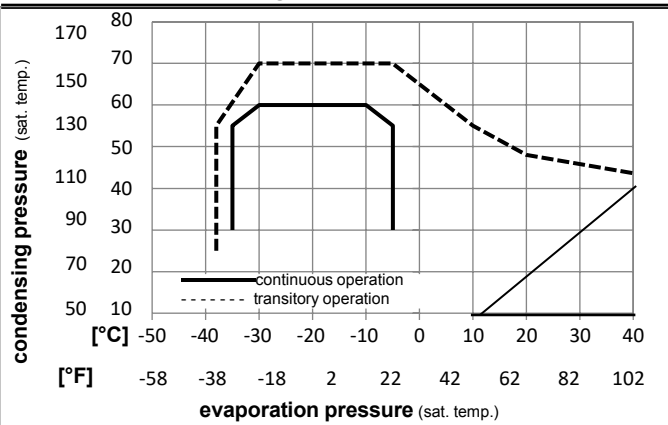


Ambient temperatures / system cooling

Ambient temperature min.: 10°C / 50°F
 Ambient temperature max.: 43°C / 110°F

System cooling (n/a: outside limits)			
T ambient	LBP	MBP	HBP
32°C / 90°F	static	n/a	n/a
38°C / 100°F	static	n/a	n/a
43°C / 110°F	static	n/a	n/a

Operation pressure range



Components (will be pre-assembled)

- terminal board (PTC, 4.8mm) BN E7
- motor protector BDG AE 90 AHM x E7
- run capacitor (1,5µF, 4.8mm) cap. 1,5µF

Additional components

- cover terminal board VDE 160943_
- clip for rubber grommet round 165226_
- sleeve for rubber grommet round 165227_

Model

Designation **ELX1105Y** 220-240V/50Hz Conf. 1 Bare code: 16526900

Optimization + standard conditions

220V/50Hz, RSCR, static, VDE

Evaporating pressure (saturation temperature)					Condensing pressure (saturation temperature)						Power consumption			
Return gas temp.					Liquid temp.						Current consumption			
Cooling capacity					COP		EER		P1	I	Ref. mass flow			
pe	pc	RGT	Tliq	[W]	[Btu/h]	[kcal/h]	[W/W]	[Btu/Wh]	[kcal/Wh]	[W]	[A]	[kg/h]		
[°C]	-23,3	45	32,2	32,2	65,7	224	56,5	2,01	6,88	1,73	32,6	0,15	0,70	opt
[°F]	-9,94	113	90	90										
[°C]	-23,3	54,4	32,2	32,2	60,0	205	51,7	1,76	6,03	1,52	34,0	0,16	0,64	ASHRAE LBP
[°F]	-10	130	90	90										
[°C]	-25	55	32	55	44,5	152	38,3	1,38	4,72	1,19	32,2	0,15	0,58	cecomaf LBP
[°F]	-13	131	89,6	131										
[°C]	-23,3	48,9	4,44	48,9	49,7	170	42,7	1,49	5,10	1,29	33,2	0,15	0,73	ARI540 LBP
[°F]	-10	120	40	120										
[°C]	-23,3	40,6	32,2	32,2	68,4	234	58,9	2,15	7,36	1,85	31,8	0,14	0,73	AHAM LBP
[°F]	-10	105	90	90										
[°C]	-35	45	32	45	28,4	97	24,4	1,34	4,58	1,15	21,2	0,09	0,34	opt
[°F]	-31	113	89,6	113										