

**APPROVALS**



**ENGINEERING CODE**  
693DA0312AA

**APPROVED REFRIGERANT**  
R290

**POWER SUPPLY**  
220 - 240V 50Hz ~

**STANDARD CONDITIONS**  
ASHRAE

**APPLICATION**  
LBP

**COOLING CAPACITY**  
285 W

**EFFICIENCY**  
1.4 W/W

**DATA**

**General Data**

<b>Weight</b>	20 Kg
<b>Height</b>	226 mm
<b>Length</b>	430 mm
<b>Width</b>	290 mm
<b>Power Supply</b>	220 - 240 V 50 Hz

**Electrical Data**

<b>Motor Type</b>	CSIR
<b>Locked Rotor Amperage (LRA)</b>	7.7 A
<b>Max Current</b>	1.19 A

**Spare Parts**

<b>Fan Kit</b>	IQ3612 200/28/5B	1996701
<b>Condenser</b>	3R8T	2451204
<b>Compressor</b>	EMT2121U	872DA67..AR
<b>Electrical Kit</b>	ELCOM EMT2121U	872DA67K3A

## Fan Motor

Number	1
Shaft Power	-
Air Flow	420 m <sup>3</sup> /h
Blade diameter	200 mm

### PERFORMANCE

## Rated Points

Ambient Temperature	Cooling Capacity	Power Consumption	Current	Efficiency
32.00°C	285 W	203 W	1.34 A	1.4 W/W

Test Condition ASHRAE: Evaporating temp. -23.30°C, Ambient temp. 32.00°C, Return Gas 32 °C, Subcooling 3K

## Performance Curve Data

Ambient Temperature 25°C

Evaporating Temperature °C	Cooling Capacity W	Power Consumption W	Current A	Efficiency W/W
-40	152	131	1.16	1.16
-30	237	175	1.23	1.35
-25	293	192	1.28	1.53
-23	314	197	1.3	1.59
-20	357	207	1.34	1.72
-15	428	224	1.4	1.91
-10	506	244	1.47	2.07

Test Condition ASHRAE: Evaporating temp. -23.30°C, Ambient temp. 25.00°C, Return Gas 32 °C, Subcooling 3K

### Ambient Temperature 32°C

Evaporating Temperature °C	Cooling Capacity W	Power Consumption W	Current A	Efficiency W/W
-40	140	136	1.2	1.03
-30	215	180	1.27	1.19
-25	266	197	1.32	1.35
-23	285	203	1.34	1.4
-20	324	214	1.38	1.52
-15	389	231	1.44	1.68
-10	460	252	1.52	1.83

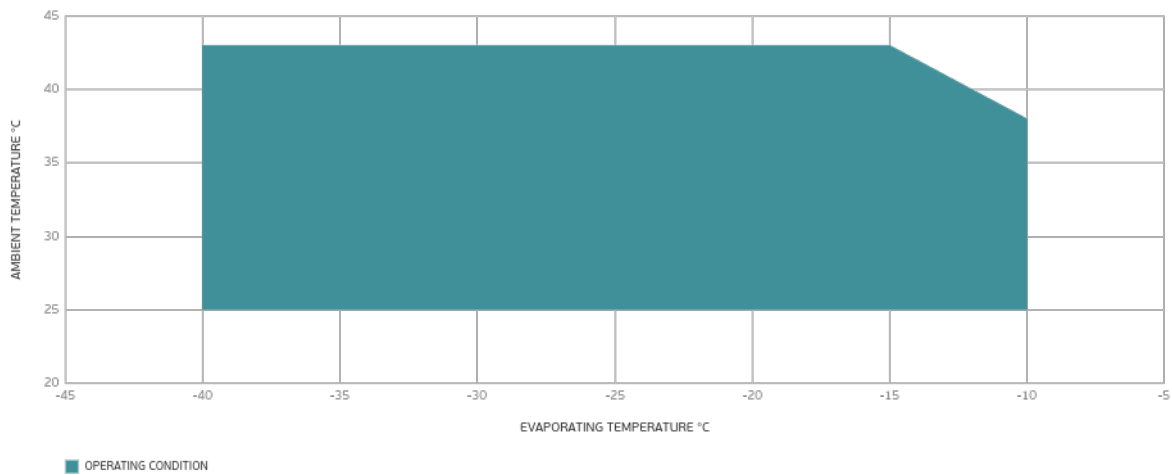
Test Condition ASHRAE: Evaporating temp. -23.30°C, Ambient temp. 32.00°C, Return Gas 32 °C, Subcooling 3K

### Ambient Temperature 43°C

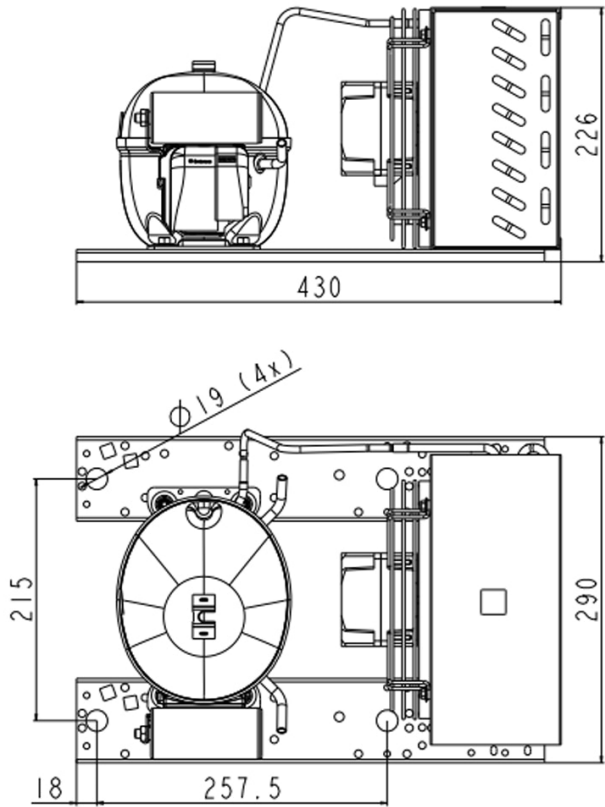
Evaporating Temperature °C	Cooling Capacity W	Power Consumption W	Current A	Efficiency W/W
-40	120	145	1.27	0.83
-30	183	191	1.34	0.96
-25	226	209	1.4	1.08
-23	242	215	1.42	1.13
-20	276	227	1.46	1.22
-15	333	246	1.53	1.35
-10	395	269	1.61	1.47

Test Condition ASHRAE: Evaporating temp. -23.30°C, Ambient temp. 43.00°C, Return Gas 32 °C, Subcooling 3K

### Operating Envelope



## External Dimensions



## Wiring Diagram

