



APPROVALS




 **ENGINEERING CODE**
692EA0012AA

 **APPROVED REFRIGERANT**
R290

 **POWER SUPPLY**
220 - 240V 50Hz ~

 **STANDARD CONDITIONS**
ASHRAE

 **APPLICATION**
LBP

 **COOLING CAPACITY**
325 W

 **EFFICIENCY**
1.48 W/W

DATA

General Data

Weight	15.4 Kg
Height	254 mm
Length	435 mm
Width	293 mm
Power Supply	220 - 240 V 50 Hz

Electrical Data

Motor Type	CSIR
Locked Rotor Amperage (LRA)	9.8 A
Max Current	1.62 A

Spare Parts

Condenser	3R9T	2451205
Compressor	EMT2125U	872EA67..AR
Fan Kit	IQ3612 230/28/5P	1996702
Electrical Kit	ELCOM EMT2125U	872EA67K3A

Fan Motor

Number	1
Shaft Power	-
Air Flow	420 m ³ /h
Blade diameter	230 mm

PERFORMANCE

Rated Points

Ambient Temperature	Cooling Capacity	Power Consumption	Current	Efficiency
32.00°C	325 W	220 W	1.61 A	1.48 W/W

Test Condition ASHRAE: Evaporating temp. -23.30°C, Ambient temp. 32.00°C, Return Gas 32 °C, Subcooling 3K

Performance Curve Data

Ambient Temperature 25°C

Evaporating Temperature °C	Cooling Capacity W	Power Consumption W	Current A	Efficiency W/W
-40	132	155	1.46	0.85
-30	268	192	1.52	1.4
-25	335	208	1.55	1.61
-23	359	214	1.57	1.68
-20	406	224	1.59	1.82
-15	484	240	1.64	2.02
-10	574	257	1.7	2.23

Test Condition ASHRAE: Evaporating temp. -23.30°C, Ambient temp. 25.00°C, Return Gas 32 °C, Subcooling 3K

Ambient Temperature 32°C

Evaporating Temperature °C	Cooling Capacity W	Power Consumption W	Current A	Efficiency W/W
-40	121	160	1.51	0.75
-30	244	198	1.56	1.23
-25	304	215	1.6	1.42
-23	325	220	1.61	1.48
-20	368	231	1.64	1.6
-15	440	247	1.69	1.78
-10	522	266	1.75	1.97

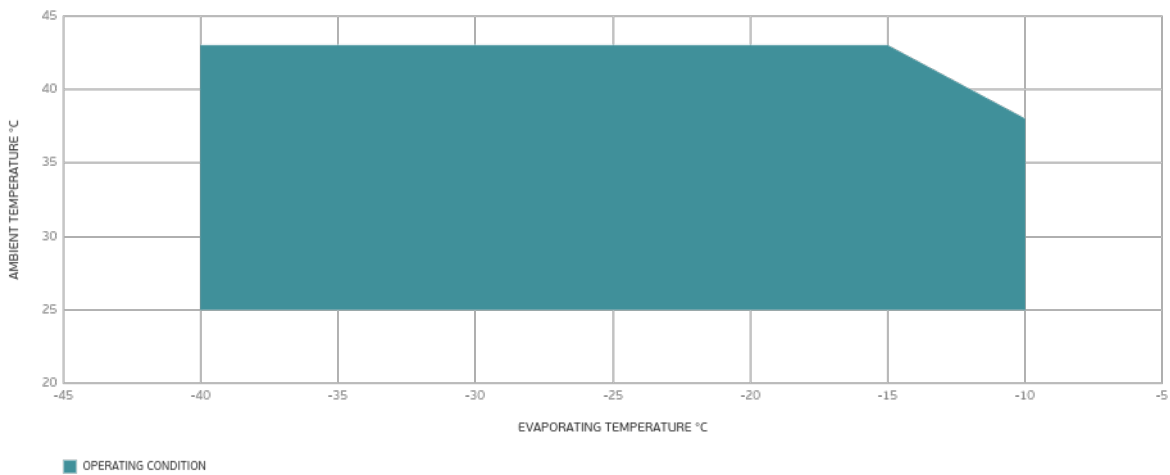
Test Condition ASHRAE: Evaporating temp. -23.30°C, Ambient temp. 32.00°C, Return Gas 32 °C, Subcooling 3K

Ambient Temperature 43°C

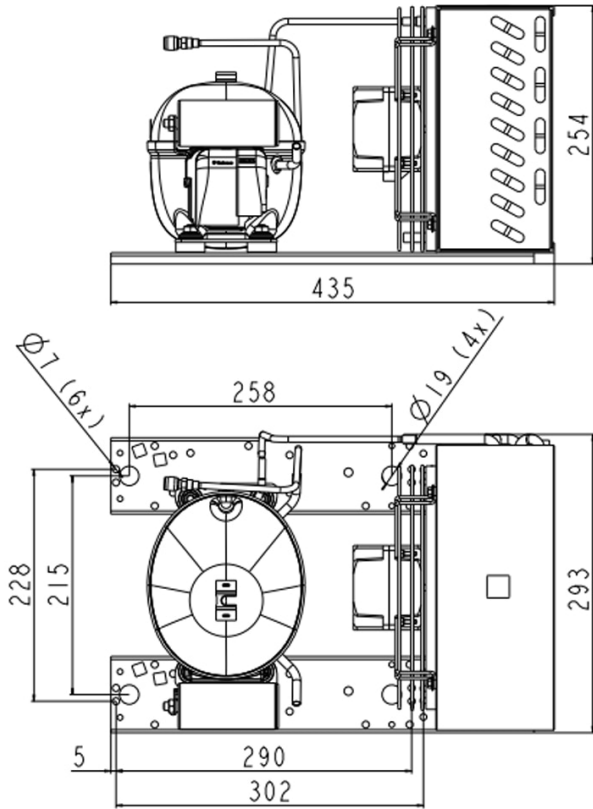
Evaporating Temperature °C	Cooling Capacity W	Power Consumption W	Current A	Efficiency W/W
-40	102	170	1.6	0.6
-30	207	210	1.66	0.99
-25	259	227	1.7	1.14
-23	277	233	1.71	1.19
-20	314	245	1.74	1.29
-15	378	263	1.8	1.44
-10	452	283	1.86	1.6

Test Condition ASHRAE: Evaporating temp. -23.30°C, Ambient temp. 43.00°C, Return Gas 32 °C, Subcooling 3K

Operating Envelope



External Dimensions



Wiring Diagram

