


APPROVALS




 **ENGINEERING CODE**
552AA0012AA

 **APPROVED REFRIGERANT**
R290

 **POWER SUPPLY**
220 - 240V 50Hz ~

 **STANDARD CONDITIONS**
ASHRAE

 **APPLICATION**
LBP

 **COOLING CAPACITY**
491 W

 **EFFICIENCY**
1.29 W/W

DATA

General Data

Weight	17.2 Kg
Height	296 mm
Length	465 mm
Width	340 mm
Power Supply	220 - 240 V 50 Hz

Electrical Data

Motor Type	CSIR
Locked Rotor Amperage (LRA)	14 A
Max Current	2.24 A

Spare Parts

Condenser	3R11T	2451206
Fan Kit	IQ3612 254/28/5P	1996703
Compressor	NEK2134U	862AA51..AM
Electrical Kit	ELKOM NEK2134U	862AA51N1A

Noise Data

Sound Power Level	64.3 dB (A)	-	-
Sound Pressure Level	at 1 m	at 5 m	at 10 m
	56.3 dB (A)	42.3 dB (A)	36.3 dB (A)

Fan Motor

Number	1
Shaft Power	-
Air Flow	595 m ³ /h
Blade diameter	254 mm

PERFORMANCE

Rated Points

Ambient Temperature	Cooling Capacity	Power Consumption	Current	Efficiency
32.00°C	491 W	380 W	2.41 A	1.29 W/W

Test Condition ASHRAE: Evaporating temp. -23.30°C, Ambient temp. 32.00°C, Return Gas 32 °C, Subcooling 3K

Performance Curve Data

Ambient Temperature 25°C

Evaporating Temperature °C	Cooling Capacity W	Power Consumption W	Current A	Efficiency W/W
-40	266	239	1.64	1.11
-30	402	323	2.13	1.25
-25	503	358	2.29	1.4
-23	542	369	2.34	1.47
-20	623	391	2.43	1.59
-15	763	424	2.58	1.8
-10	921	458	2.77	2.01

Test Condition ASHRAE: Evaporating temp. -23.30°C, Ambient temp. 25.00°C, Return Gas 32 °C, Subcooling 3K

Ambient Temperature 32°C

Evaporating Temperature °C	Cooling Capacity W	Power Consumption W	Current A	Efficiency W/W
-40	246	248	1.71	0.99
-30	365	333	2.19	1.1
-25	455	369	2.36	1.24
-23	491	380	2.41	1.29
-20	565	403	2.51	1.4
-15	693	437	2.66	1.59
-10	838	472	2.86	1.77

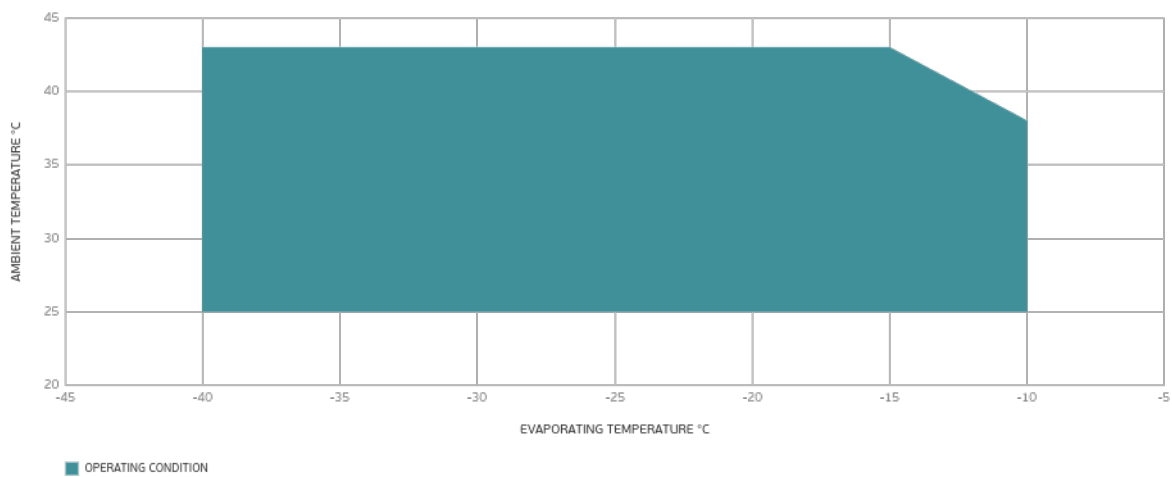
Test Condition ASHRAE: Evaporating temp. -23.30°C, Ambient temp. 32.00°C, Return Gas 32 °C, Subcooling 3K

Ambient Temperature 43°C

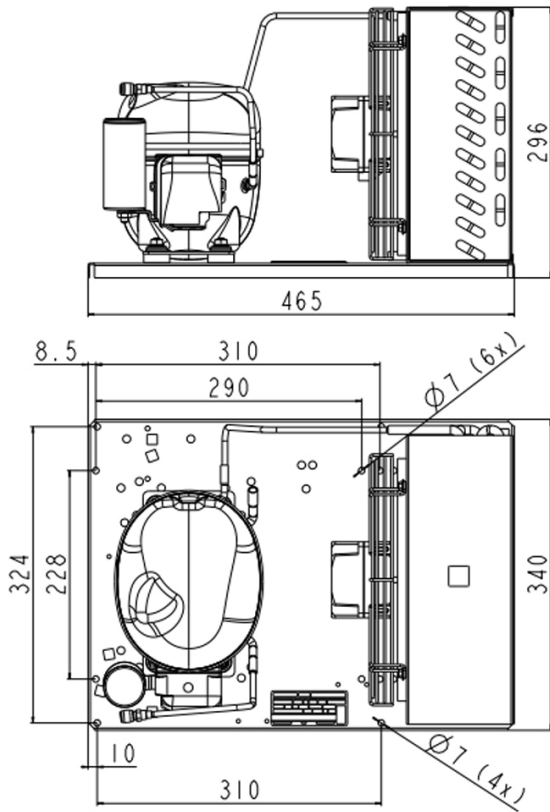
Evaporating Temperature °C	Cooling Capacity W	Power Consumption W	Current A	Efficiency W/W
-40	211	263	1.82	0.8
-30	309	353	2.32	0.88
-25	387	391	2.5	0.99
-23	418	404	2.56	1.04
-20	483	427	2.66	1.13
-15	596	464	2.84	1.28
-10	723	502	3.05	1.44

Test Condition ASHRAE: Evaporating temp. -23.30°C, Ambient temp. 43.00°C, Return Gas 32 °C, Subcooling 3K

Operating Envelope



External Dimensions



Wiring Diagram

