


APPROVALS



 **ENGINEERING CODE**
594PA9012AA


 **APPROVED REFRIGERANT**
R134a

 **POWER SUPPLY**
220 - 240V 50Hz ~

 **STANDARD CONDITIONS**
ASHRAE

 **APPLICATION**
M/HBP

 **COOLING CAPACITY**
572 W

 **EFFICIENCY**
2.43 W/W

DATA

General Data

Weight	14 Kg
Height	226 mm
Length	430 mm
Width	290 mm
Power Supply	220 - 240 V 50 Hz

Electrical Data

Motor Type	RSIR
Locked Rotor Amperage (LRA)	8.5 A
Max Current	1.48 A

Spare Parts

Condenser	3R8T	2451204
Fan Kit	10W 200/28/5B	1996581
Compressor	EMT6144Z	194PA67..AR
Electrical Kit	ELCOM EMT6144Z	194PA6764A

Noise Data

Sound Power Level	59.2 dB (A)	-	-
Sound Pressure Level	at 1 m	at 5 m	at 10 m
	51.2 dB (A)	37.2 dB (A)	31.2 dB (A)

Fan Motor

Number	1
Shaft Power	10 W
Air Flow	300 m ³ /h
Blade diameter	200 mm

PERFORMANCE

Rated Points

Ambient Temperature	Evaporating Temperature	Cooling Capacity	Power Consumption	Current	Efficiency
32.00°C	7.20°C	572 W	235 W	1.48 A	2.43 W/W

Test Condition ASHRAE: Evaporating temp. 7.20°C, Ambient temp. 32.00°C, Return Gas 32 °C, Subcooling 3K

Performance Curve Data

Ambient Temperature 25°C

Evaporating Temperature °C	Cooling Capacity W	Power Consumption W	Current A	Efficiency W/W
-15	274	157	1.23	1.74
-5	412	186	1.31	2.22
0	494	202	1.36	2.44
5	586	220	1.41	2.67
7	630	228	1.44	2.76
10	688	239	1.47	2.88

Test Condition ASHRAE: Evaporating temp. 7.20°C, Ambient temp. 25.00°C, Return Gas 32 °C, Subcooling 3K

Ambient Temperature 32°C

Evaporating Temperature °C	Cooling Capacity W	Power Consumption W	Current A	Efficiency W/W
-15	247	163	1.27	1.52
-5	377	191	1.35	1.97
0	451	208	1.4	2.17
5	534	227	1.46	2.36
7	572	235	1.48	2.43
10	624	246	1.52	2.53

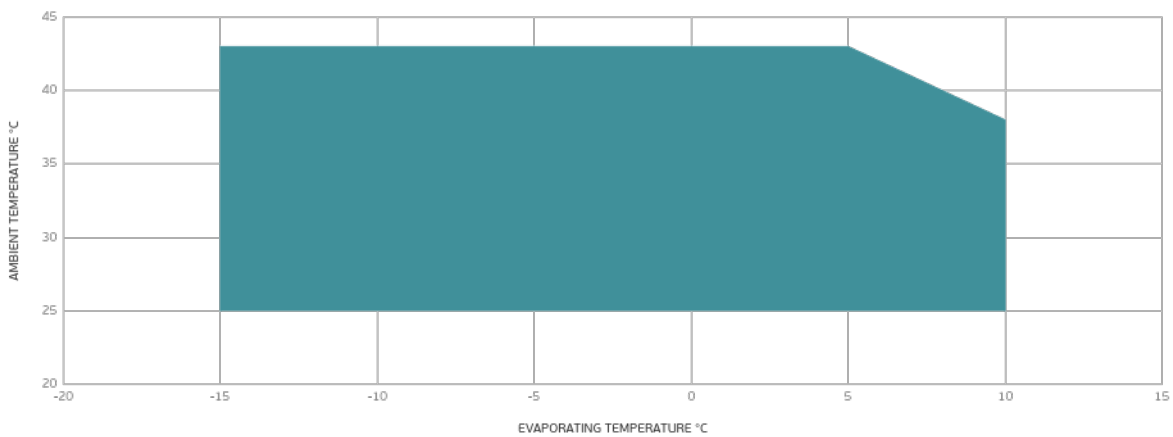
Test Condition ASHRAE: Evaporating temp. 7.20°C, Ambient temp. 32.00°C, Return Gas 32 °C, Subcooling 3K

Ambient Temperature 43°C

Evaporating Temperature °C	Cooling Capacity W	Power Consumption W	Current A	Efficiency W/W
-15	205	172	1.29	1.19
-5	339	202	1.37	1.68
0	412	220	1.43	1.87
5	489	240	1.49	2.04
7	524	249	1.52	2.1
10	570	262	1.57	2.17

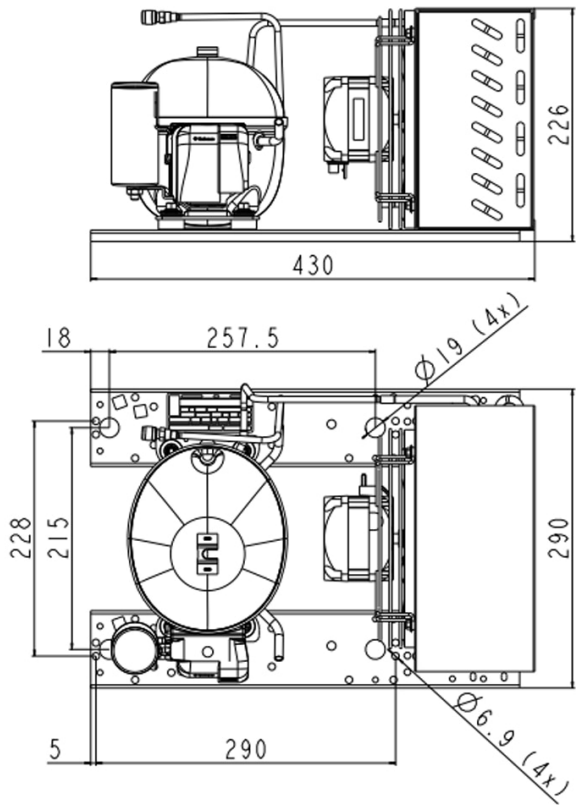
Test Condition ASHRAE: Evaporating temp. 7.20°C, Ambient temp. 43.00°C, Return Gas 32 °C, Subcooling 3K

Operating Envelope



■ OPERATING CONDITION

External Dimensions



Wiring Diagram

