


APPROVALS



 **ENGINEERING CODE**
668HA9012AA

 **APPROVED REFRIGERANT**
R134a

 **POWER SUPPLY**
220 - 240V 50Hz ~

 **STANDARD CONDITIONS**
ASHRAE

 **APPLICATION**
M/HBP

 **COOLING CAPACITY**
1257 W

 **EFFICIENCY**
2.3 W/W

DATA

General Data

Weight	21 Kg
Height	296 mm
Length	465 mm
Width	340 mm
Power Supply	220 - 240 V 50 Hz

Electrical Data

Motor Type	CSIR
Locked Rotor Amperage (LRA)	18.5 A
Max Current	2.83 A

Spare Parts

Condenser	3R11T	2451206
Fan Kit	16W 254/28/5B	1996579
Compressor	NEU6210Z	268HA51..AN
Electrical Kit	ELKOM NEU6210Z	268HA51N1A

Noise Data

Sound Power Level	64.3 dB (A)	-	-
Sound Pressure Level	at 1 m	at 5 m	at 10 m
	56.3 dB (A)	42.3 dB (A)	36.3 dB (A)

Fan Motor

Number	1
Shaft Power	16 W
Air Flow	595 m ³ /h
Blade diameter	254 mm

PERFORMANCE

Rated Points

Ambient Temperature	Evaporating Temperature	Cooling Capacity	Power Consumption	Current	Efficiency
32.00°C	7.20°C	1257 W	546 W	3.44 A	2.3 W/W

Test Condition ASHRAE: Evaporating temp. 7.20°C, Ambient temp. 32.00°C, Return Gas 32 °C, Subcooling 3K

Performance Curve Data

Ambient Temperature 25°C

Evaporating Temperature °C	Cooling Capacity W	Power Consumption W	Current A	Efficiency W/W
-15	594	345	2.82	1.72
-5	911	416	3.01	2.19
0	1097	460	3.14	2.39
5	1294	508	3.28	2.55
7	1383	530	3.34	2.61
10	1496	558	3.41	2.68

Test Condition ASHRAE: Evaporating temp. 7.20°C, Ambient temp. 25.00°C, Return Gas 32 °C, Subcooling 3K

Ambient Temperature 32°C

Evaporating Temperature °C	Cooling Capacity W	Power Consumption W	Current A	Efficiency W/W
-15	543	355	2.94	1.53
-5	824	430	3.05	1.92
0	994	475	3.19	2.09
5	1175	524	3.36	2.24
7	1257	546	3.44	2.3
10	1363	575	3.55	2.37

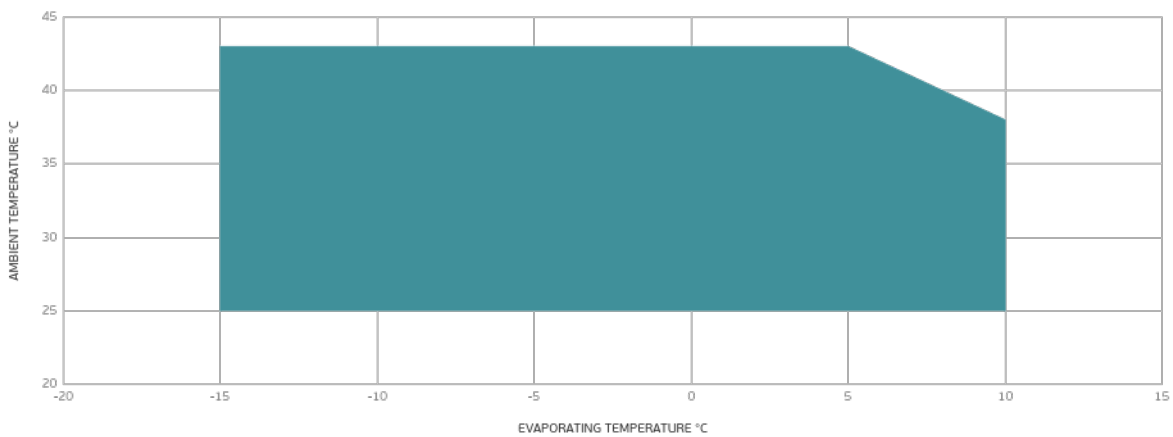
Test Condition ASHRAE: Evaporating temp. 7.20°C, Ambient temp. 32.00°C, Return Gas 32 °C, Subcooling 3K

Ambient Temperature 43°C

Evaporating Temperature °C	Cooling Capacity W	Power Consumption W	Current A	Efficiency W/W
-15	453	375	3.07	1.21
-5	692	457	3.14	1.51
0	841	506	3.31	1.66
5	1004	558	3.56	1.8
7	1079	581	3.69	1.86
10	1175	611	3.87	1.92

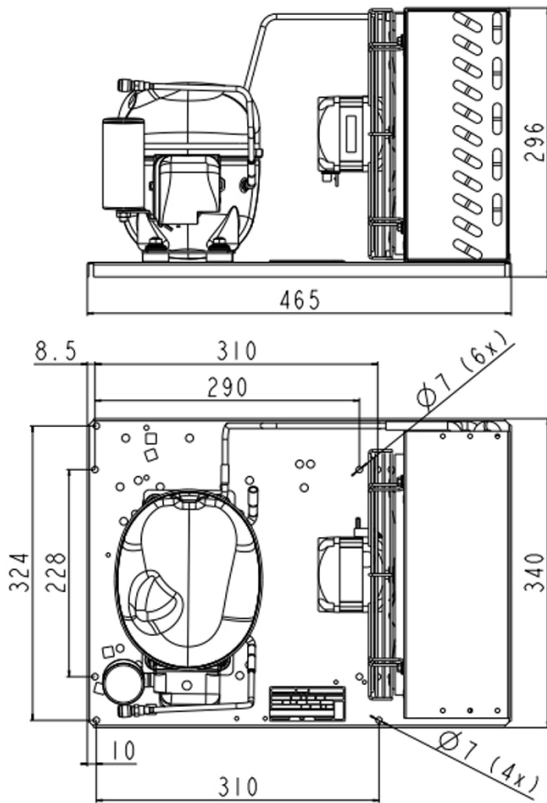
Test Condition ASHRAE: Evaporating temp. 7.20°C, Ambient temp. 43.00°C, Return Gas 32 °C, Subcooling 3K

Operating Envelope



■ OPERATING CONDITION

External Dimensions



Wiring Diagram

