


**APPROVALS**




 **ENGINEERING CODE**  
568JA9012AA

 **APPROVED REFRIGERANT**  
R404A

 **POWER SUPPLY**  
220 - 240V 50Hz ~

 **STANDARD CONDITIONS**  
ASHRAE

 **APPLICATION**  
LBP

 **COOLING CAPACITY**  
514 W

 **EFFICIENCY**  
1.37 W/W

DATA

**General Data**

<b>Weight</b>	19.7 Kg
<b>Height</b>	296 mm
<b>Length</b>	465 mm
<b>Width</b>	340 mm
<b>Power Supply</b>	220 - 240 V 50 Hz

**Electrical Data**

<b>Motor Type</b>	CSIR
<b>Locked Rotor Amperage (LRA)</b>	13.5 A
<b>Max Current</b>	3.05 A

**Spare Parts**

<b>Condenser</b>	3R11T	2451206
<b>Fan Kit</b>	16W 254/28/5B	1996579
<b>Compressor</b>	NEU2140GK	958JA51..AN
<b>Electrical Kit</b>	ELKOM NEU2140GK	958JA51N1A

## Fan Motor

Number	1
Shaft Power	16 W
Air Flow	595 m <sup>3</sup> /h
Blade diameter	254 mm

### PERFORMANCE

## Rated Points

Ambient Temperature	Cooling Capacity	Power Consumption	Current	Efficiency
32.00°C	514 W	375 W	2.31 A	1.37 W/W

Test Condition ASHRAE: Evaporating temp. -23.30°C, Ambient temp. 32.00°C, Return Gas 32 °C, Subcooling 3K

## Performance Curve Data

Ambient Temperature 25°C

Evaporating Temperature °C	Cooling Capacity W	Power Consumption W	Current A	Efficiency W/W
-40	256	254	1.93	1.01
-30	437	316	2.12	1.39
-25	540	347	2.22	1.56
-23	576	358	2.26	1.61
-20	650	380	2.34	1.71
-15	767	416	2.47	1.85
-10	891	454	2.63	1.96

Test Condition ASHRAE: Evaporating temp. -23.30°C, Ambient temp. 25.00°C, Return Gas 32 °C, Subcooling 3K

### Ambient Temperature 32°C

Evaporating Temperature °C	Cooling Capacity W	Power Consumption W	Current A	Efficiency W/W
-40	223	247	1.9	0.9
-30	388	322	2.13	1.21
-25	481	361	2.26	1.33
-23	514	375	2.31	1.37
-20	580	403	2.41	1.44
-15	685	449	2.59	1.53
-10	795	499	2.79	1.59

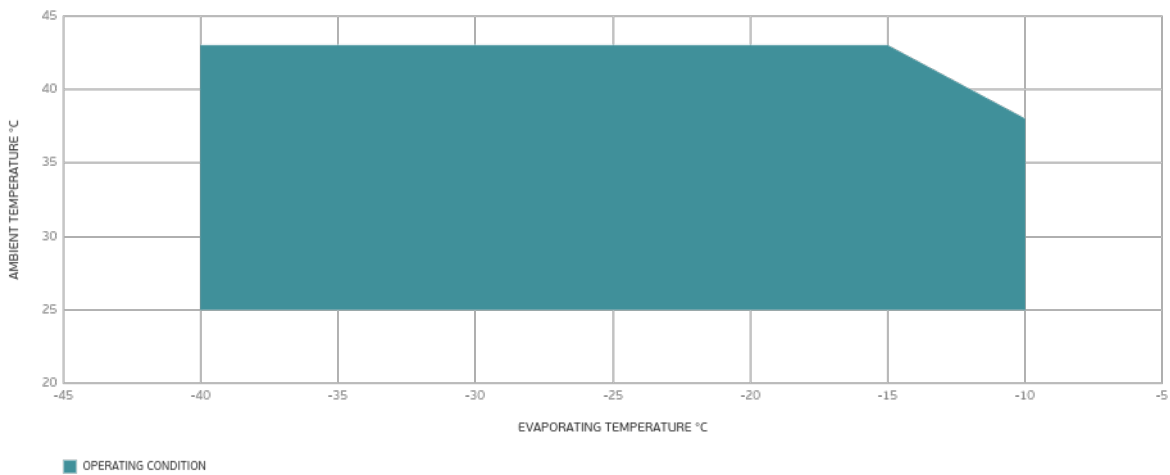
Test Condition ASHRAE: Evaporating temp. -23.30°C, Ambient temp. 32.00°C, Return Gas 32 °C, Subcooling 3K

### Ambient Temperature 43°C

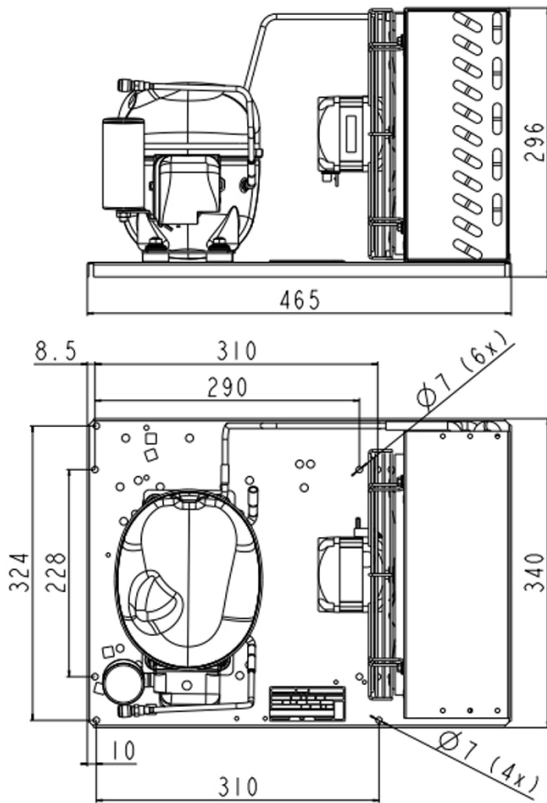
Evaporating Temperature °C	Cooling Capacity W	Power Consumption W	Current A	Efficiency W/W
-40	165	258	1.93	0.64
-30	307	332	2.16	0.92
-25	386	374	2.3	1.03
-23	413	389	2.36	1.06
-20	468	421	2.47	1.11
-15	555	472	2.67	1.18
-10	645	529	2.91	1.22

Test Condition ASHRAE: Evaporating temp. -23.30°C, Ambient temp. 43.00°C, Return Gas 32 °C, Subcooling 3K

### Operating Envelope



## External Dimensions



## Wiring Diagram

