

APPROVALS



 **ENGINEERING CODE**

569QA8212AA

 **APPROVED REFRIGERANT**

R404A

 **POWER SUPPLY**

220 - 240V 50Hz ~

 **STANDARD CONDITIONS**

ASHRAE

 **APPLICATION**

LBP

 **COOLING CAPACITY**

671 W

 **EFFICIENCY**

1.32 W/W

DATA

General Data

Weight	21.6 Kg
Receiver	1.1 L
Height	296 mm
Length	465 mm
Width	340 mm
Power Supply	220 - 240 V 50 Hz

Electrical Data

Motor Type	CSIR
Locked Rotor Amperage (LRA)	18 A
Max Current	4.21 A

Spare Parts

Condenser	3R11T	2451206
Valve Suction	FLARE 3/8"	2110059
Valve Discharge	FLARE 1/4"	2110085
Fan Kit	16W 254/28/5L	1996579
Compressor	NEU2155GK	959QA51..AN
Electrical Kit	ELKOM NEU2155GK	959QA51M1A

Fan Motor

Number	1
Shaft Power	16 W
Air Flow	595 m ³ /h
Blade diameter	254 mm

PERFORMANCE

Rated Points

Ambient Temperature	Cooling Capacity	Power Consumption	Current	Efficiency
32.00°C	671 W	508 W	3.34 A	1.32 W/W

Test Condition ASHRAE: Evaporating temp. -23.30°C, Ambient temp. 32.00°C, Return Gas 32 °C, Subcooling 3K

Performance Curve Data

Ambient Temperature 25°C

Evaporating Temperature °C	Cooling Capacity W	Power Consumption W	Current A	Efficiency W/W
-40	338	341	2.89	0.99
-30	567	426	3.09	1.33
-25	703	476	3.24	1.48
-23	753	494	3.29	1.52
-20	854	530	3.41	1.61
-15	1020	589	3.61	1.73
-10	1201	651	3.84	1.84

Test Condition ASHRAE: Evaporating temp. -23.30°C, Ambient temp. 25.00°C, Return Gas 32 °C, Subcooling 3K

Ambient Temperature 32°C

Evaporating Temperature °C	Cooling Capacity W	Power Consumption W	Current A	Efficiency W/W
-40	295	348	2.92	0.85
-30	503	436	3.12	1.16
-25	627	489	3.28	1.28
-23	671	508	3.34	1.32
-20	763	548	3.47	1.39
-15	912	612	3.69	1.49
-10	1076	682	3.94	1.58

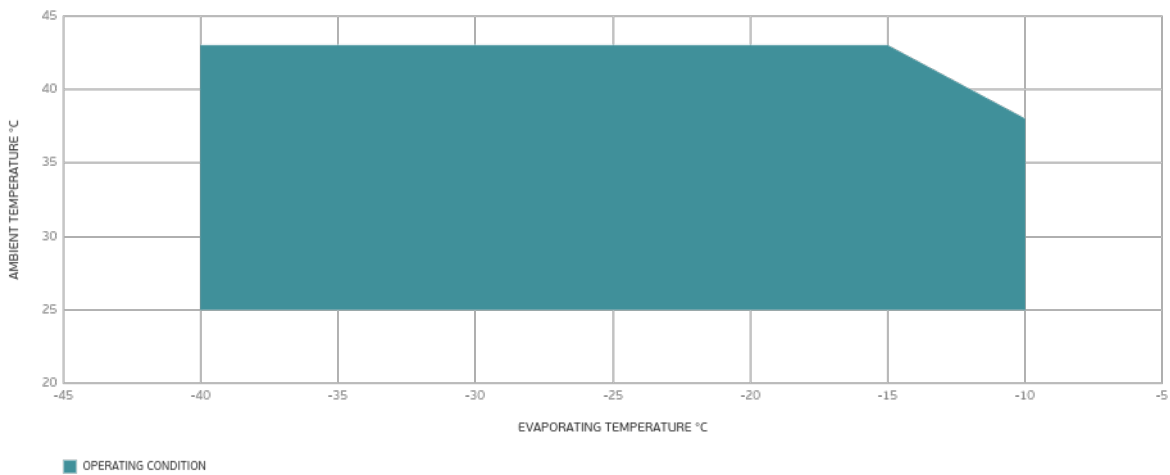
Test Condition ASHRAE: Evaporating temp. -23.30°C, Ambient temp. 32.00°C, Return Gas 32 °C, Subcooling 3K

Ambient Temperature 43°C

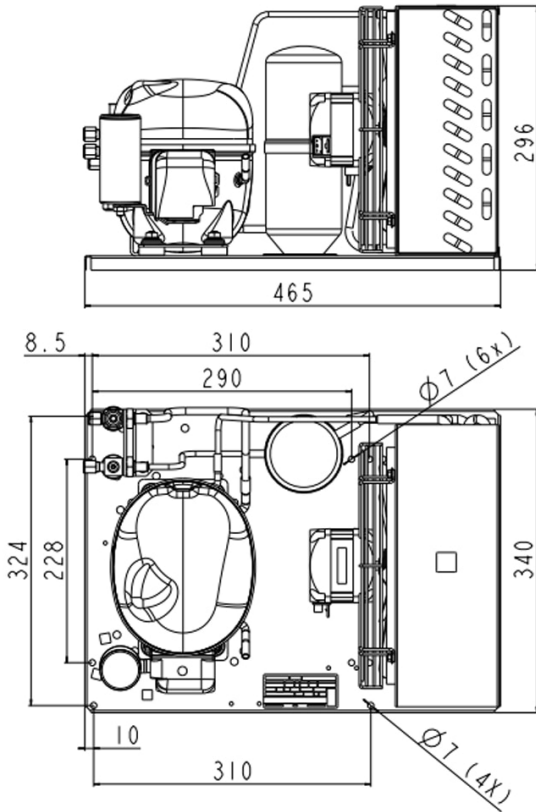
Evaporating Temperature °C	Cooling Capacity W	Power Consumption W	Current A	Efficiency W/W
-40	237	355	2.95	0.67
-30	409	453	3.17	0.9
-25	510	514	3.35	0.99
-23	547	537	3.42	1.02
-20	622	583	3.58	1.07
-15	745	659	3.85	1.13
-10	880	743	4.16	1.18

Test Condition ASHRAE: Evaporating temp. -23.30°C, Ambient temp. 43.00°C, Return Gas 32 °C, Subcooling 3K

Operating Envelope



External Dimensions



Wiring Diagram

